

Michele's Celebrations

Costume Catalog Fall & Christmas 2010

Ideal For
Pageants
Plays
Drama
Parties
Dress-Up!!!



Costumes, Accessories,
Props For . . .

- Shepherds
- Nativity
- Biblical Characters
- Romans
- Angels
- Kings



Michele's Celebrations, Inc.
1027 Old York Rd.
Ringoes, NJ 08551-1054
Web Site: <http://www.michelescelebrations.com>
E-mail: mcelebrations@aol.com

Prices in effect
until 12/31/10

Rev. 8/6/10

New Costumes



At left are the biblical shepherdess or other biblical character costumes. Comes with white & natural combination headpiece, white belt with gold trim, and robe with ribbon trim. Robe is light blue or burnt orange. Light blue can be used for Mary as well. Orange can also be used for Mary

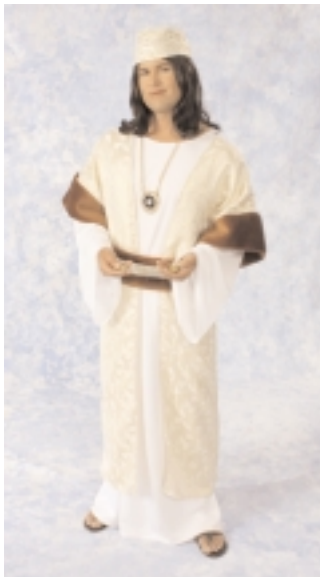
Magdalene. Polyester and/or cotton. U.S.A. of domestic or imported fabric.



Costume can be used for a tax collector or other biblical rich man. Comes with white gown and black overcoat with trim and hat. Polyester/Cotton. U.S.A. of domestic or imported fabrics. One size fits most regular adults.

Part #	Description	Price Each
#C0888	Tax Collector	\$ 77.95

Part #	Description	Price Each
#C4950	Biblical Shepherdess Blue	\$ 64.95
#C4951	Biblical Shepherdess Orange	\$ 64.95



Costume can be used for a biblical rich man. Comes with white gown and cream overcoat with brown trim and hat. Polyester/Cotton. U.S.A. of domestic or imported fabrics. One size fits most regular adults.



Costume can be used for an apostle or other biblical character. Comes with cream gown, belt, and goldtone trim.. Polyester/Cotton. U.S.A. of domestic or imported fabrics. One size fits most regular adults.

Part #	Description	Price Each
#C0893	Apostle	\$ 79.95

Part #	Description	Price Each
#C0890	Wealthy Merchant	\$ 79.95

New Children's Costumes



Biblical peasant costumes come with gown, headpiece, and robe belt. U.S.A. of domestic or imported fabric. Child sizes small (4-6), medium (8-10), and large (12-14).

Part #	Description	Price Each
#C0950	Biblical Peasant Child small blue	\$ 37.95
#C0951	Biblical Peasant Child small brown	\$ 37.95
#C0952	Biblical Peasant Child small burgundy	\$ 37.95
#C0953	Biblical Peasant Child small rust	\$ 37.95
#C0954	Biblical Peasant Child small tan	\$ 37.95
#C0955	Biblical Peasant Child medium blue	\$ 37.95
#C0956	Biblical Peasant Child medium brown	\$ 37.95
#C0957	Biblical Peasant Child medium burgundy	\$37.95
#C0958	Biblical Peasant Child medium rust	\$ 37.95
#C0959	Biblical Peasant Child medium tan	\$ 37.95
#C0960	Biblical Peasant Child large blue	\$ 37.95
#C0961	Biblical Peasant Child large brown	\$ 37.95
#C0962	Biblical Peasant Child large burgundy	\$ 37.95
#C0963	Biblical Peasant Child large rust	\$ 37.95
#C0964	Biblical Peasant Child large tan	\$ 37.95



Biblical townschild costumes come with gown, overcoat, headpiece, and robe belt. U.S.A. of domestic or imported fabric. Child sizes small, medium, and large. Polyester and/or cotton. Economy staff sold separately.

Part #	Description	Price Each
#C0967	Biblical Townshild small blue	\$ 44.95
#C0968	Biblical Townshild small rust	\$ 44.95
#C0969	Biblical Townshild small burgundy	\$ 44.95
#C0970	Biblical Townshild small tan	\$ 44.95
#C0967	Biblical Townshild medium blue	\$ 44.95
#C0968	Biblical Townshild medium rust	\$ 44.95
#C0969	Biblical Townshild medium burgundy	\$ 44.95
#C0970	Biblical Townshild medium tan	\$ 44.95
#C0967	Biblical Townshild large blue	\$ 44.95
#C0968	Biblical Townshild large rust	\$ 44.95
#C0969	Biblical Townshild large burgundy	\$ 44.95
#C0970	Biblical Townshild large tan	\$ 44.95

Biblical Costumes

Disciples & Shepherds



On left is costume for a Disciple or other biblical character. Comes under-gown with long sleeves, coat, and sash. Robe belt also included. The shepherd staff is sold separately.

Wood straight staff has natural bends of wood. Light finish. U.S.A.

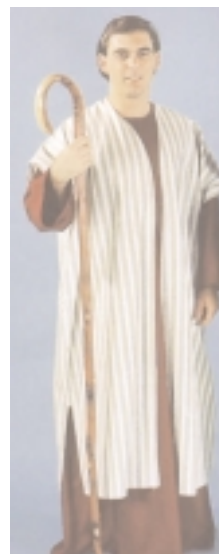


Ideal for shepherd or biblical man in the wilderness. The head covering and matching gown are made from an earthtone fabric. The drape comes in assorted colors. Polyester/Cotton. U.S.A. Staff separately.

Wood hickory straight staff deluxe sold separately. Varnished. U.S.A. Natural bends of wood.

Part #	Description	Price Each
#C0294	Shepherd # 2	\$ 59.95
#C0902	Wood Shepherd's Staff Adult Deluxe	\$ 19.95

Part #	Description	Price Each
#C6077	Disciple Costume	\$ 74.95
#C0881	Wood Shepherd's Staff Adult Economy	\$ 17.95



Joseph costume consists of a robe and overcoat. Fabrics vary. Costume made in U.S.A. of domestic or imported fabrics. Tan outfit. Sometimes coat is brown/tan or white with brown/rust robe. Color varies

Adult size quality wood hickory crook looks handmade. Natural bends of wood for more authentic look. High varnish in darker color. U.S.A.

Part #	Description	Price Each
#C0875	Joseph Costume	\$ 57.95
#C0900	Wood Shepherds Crook Adult Deluxe	\$ 39.95

Tall Staffs

Plastic crook staff measures over 6 feet in height. Ideal for use by tall men for a dramatic effect. Made of heavy duty plastic. Lightweight to carry. Comes apart in 2 pieces. Imported.

The tallest crook staff in wood is 6 1/2 feet and made of lightweight wood. No varnish finish. Natural wood milled straight. Hook on top. **Tallest staff yet found!**



This costume is very colorful. It would be ideal to wear as Joseph and his coat of many colors. The costume can also be worn just as another biblical character as well. High quality. The robe is navy; the overcoat is made of a colorful fabric. The headpiece is navy, as well. Cotton. One size fits most. **Tall staff sold separately at left.**

Part #	Description	Price Each
#C0299	Colorful Biblical Male	\$ 89.95

Part #	Description	Price Each
#C2202	Tall Shepherd's Plastic Crook Brown	\$ 9.95
#C2210	Tallest Wood Crook	\$ 44.95



Shepherd costume includes soft, white sheepskin vest, natural/brown gown with long sleeves, robe belt, and headpiece. Shepherd's crook sold separately.

Pieces also sold separately.

The economy wood hickory crook is light finish. Made in U.S.A. Milled wood, so not natural wood bends.



These plain robes with corded belt are great for Jesus or a character in wilderness plain outfit. One size fits most. Available in a light tan or brown. **The brown is calf or knee length; the tan robe is longer.** Tan robe U.S.A. of imported or domestic fabric. Brown robe U.S.A. or imported. Wood staff sold separately

Part #	Description	Price Each
#C6082	Shepherd W/ Sheepskin Costume	\$ 59.95
#C6083	Sheepskin Vest Adult Medium	\$ 17.95
#C6084	Sheepskin Vest Adult Large	\$ 17.95
#C6085	Shepherd Robe Adult Medium	\$ 34.95
#C6086	Shepherd Robe Adult Large	\$ 34.95
#C6087	Shepherd Crook Adult Economy Wood	\$ 24.95

Part #	Description	Price Each
#C0889	Biblical Plain Robe Tan Adult	\$ 28.50
#C0890	Biblical Plain Robe Brown Adult	\$ 28.50
#C0881	Wood Straight Staff Economy Adult	\$ 17.95



On left is biblical townman costume. Comes with light-colored headpiece and robe with dark bluish overcoat. Polyester and/or cotton. U.S.A. of domestic or imported fabric.

Part #	Description	Price Each
#C4430	Biblical Townsman	\$ 69.95



Shepherd's costume is a natural fabric with a thin stripe. Consists of a corded belt, headpiece, and robe. U.S.A. of domestic or imported fabrics. Colors may vary slightly. Staff separate.

Shepherd's straight wood staff economy is sold separately; has some natural wood bends. Approx. 55"-60 inches. U.S.A. made.

Part #	Description	Price Each
#C0888	Biblical Shepherd Lt. Stripe Adult	\$ 47.95
#C0881	Wood Shep Straight Staff Econ Adult	\$ 17.95

Biblical Beards & Wigs

Part #	Description	Price Each
#C0324	Brown Biblical Beard/Wig Set	\$ 27.95
#C0325	Black Biblical Beard/Wig Set	\$ 27.95
#C0326	White Biblical Beard/Wig Set	\$ 27.95
#C0327	Grey Biblical Beard/Wig Set	\$ 27.95
#C0328	Brown Biblical Curly Beard	\$ 4.95
#C0329	Black Biblical Curly Beard	\$ 4.95
#C0330	Grey Biblical Curly Beard	\$ 4.95
#C4252	Brown Biblical Wig (Jesus)	\$ 22.95



Part #	Description	Price Each
#C4420	Shepherd Headpiece with cord	\$ 4.50
#C6070	Shepherd Headpiece with band	\$ 4.50

Choose headpieces from a variety of colors.

Shepherd's Bag

This leather winebag is to be used as a costume prop. Can be carried by a shepherd or biblical character. **Not for drinks.**



Part #	Description	Price Each
#C0338	Winebag Prop	\$ 7.95

Basic Biblical Clothing



The overcoat at left is in assorted colors. Currently in a blue, white,



brown stripe. U.S.A. of imported or domestic fabric. Size adult regular.

At right is robe. Solid undertunic available in natural, black, white, or rust color. U.S.A. or domestic or imported fabric. Size adult regular.

Part #	Description	Price Each
#C6054	Biblical Overcoat blue stripe	\$ 17.95
#C6055	Biblical Robe Undertunic Long Natural	\$ 24.95
#C6056	Biblical Robe Undertunic Long Black	\$ 24.95
#C6057	Biblical Robe Undertunic Long White	\$ 24.95
#C6058	Biblical Robe Undertunic Long Rust	\$ 24.95



Deluxe

Part #	Description	Price Each
#C6410	Deluxe Joseph Biblical Man	\$ 69.95

Deluxe



This is a deluxe version of the Jesus costume. Comes with tan tunic, brown coat, and tan head covering. Fabric blend. U.S.A. of domestic or imported fabrics.

Part #	Description	Price Each
#C6080	Ultra Deluxe Jesus costume	\$ 52.95

The small crook is 50" in length and is available in cream or brown plastic.

The fabric costume can be worn either by girls or boys for a biblical child outfit. U.S.A. Ideal for shepherd boy. The robe is a earthtone stripe with matching headpiece. Or can be purchased as a tweed/textured fabric that is not a stripe.



Fabric varies gold tan to brown. One size fits most regular size children from sizes 7-12.

Plastic staff sold separately.

Part #	Description	Price Each
#C0307	Biblical Child Costume Striped	\$ 39.95
#C0308	Biblical Child Costume Tweed	\$ 39.95
#C0270	Plastic Cream Child Staff	\$ 4.75
#C0271	Plastic Brown Child Staff	\$ 4.75

Deluxe wood shepherds staffs are heavily varnished and have the natural bends of wood. Made in the U.S.A. **(Not pictured).**

Part #	Description	Price Each
#C1958	Wood Child Crook Deluxe	\$ 24.95
#C1959	Wood Child Staff Deluxe	\$ 11.95



Earthtone gown comes with robe belt. Economy crook is sold separately; milled look. U.S.A.

Part #	Description	Price Each
#C6010	Shepherd Gown Child Small	\$ 24.95
#C6011	Shepherd Gown Child Medium	\$ 24.95
#C6012	Shepherd Gown Child Large	\$ 24.95
#C1960	Wood Child Crook wood economy	\$ 17.95



Costumes are child sizes. Can be used for Mary and Joseph or for other biblical characters. U.S.A. Wood staff with crook **sold separately** (heavy - for older children). **Also straight wood staff available (not pictured).**

Part #	Description	Price Each
#C0978	Biblical Mary Child Size 4-6	\$ 39.95
#C0979	Biblical Mary Child Size 8-10	\$ 39.95
#C0980	Biblical Mary Child Size 12-14	\$ 39.95
#C0981	Biblical Joseph Child Size 4-6	\$ 39.95
#C0982	Biblical Joseph Child Size 8-10	\$ 39.95
#C0983	Biblical Joseph Child Size 12-14	\$ 39.95

Shepherd Child



Shepherd costume includes soft, white sheepskin vest, natural/brown gown with long sleeves, robe belt, and headpiece.

Shepherd's crook sold separately. Vest also sold separately.

Part #	Description	Price Each
#C6088	Shepherd W/ Sheepskin Child Med	\$ 49.95
#C6089	Shepherd W/ Sheepskin Child Larg	\$ 49.95
#C6090	Sheepskin Vest Child	\$ 14.50
#C1960	Wood Child Crook wood economy	\$ 17.95

Judas Costume



On left is costume for a Jesus or other biblical character. Comes undergown with long white sleeves, tunic, and sash belt. Money bag not included.

Michele's can special order other historical costumes of various time periods and international costumes. Priests, nuns, monks, cardinals, bishops, angel wings, Pilgrim/Puritan, Colonial, Spanish, Orient, Retro., Renaissance, etc.

Part #	Description	Price Each
#C6078	Judas Costume	\$ 54.95

Roman Citizens & Officials

The laural leaf headpiece is a great accessory. Made of mettalic gold foil or plastic. Ideal for Romans, Greeks, officials. Foil will reflect light on stage. Deluxe is best quality like artificial leaves.



Part #	Description	Price Each
#C3950	Metallic Foil Golden Laurel Leaf	\$ 2.50
#C0323	Golden Plastic Laurel Leaf	\$ 1.95
#C3957	Green Deluxe Laurel Leaf	\$ 4.50
#C3951	Gold Deluxe Laurel Leaf	\$ 4.50

A gown and drape make up these toga outfits. The woman's toga also comes with a gold corded belt. Headpieces and bracelets are not included. **Colors vary.** One size fits most regular adults. U.S.A.



Part #	Description	Price Each
#C0296	Toga Man	\$ 37.95
#C0297	Toga Woman	\$ 37.95



On left is costume for a Jesus or other biblical character. Comes white long-sleeved polyester undergown, long-sleeved burgundy cotton/poly twill overcoat, and robe belt.

Part #	Description	Price Each
#C6080	Jesus Costume	\$ 57.95

Crown of Thorns



This crown of thorns is made of bendable brown **plastic**. The plastic is 4 yards long and is wrapped around the head. Imported.

Part #	Description	Price Each
#C0322	Crown of Thorns	\$ 5.75



Set at let is a Roman guard costume with red tunic and leather look belt. **Helmet, sword, and sandals not included.** Sold separately. U.S.A.



These helmets have a brush on top for a more realistic look. Heavy duty **gold** plastic. The helmets come with either a black brush or a red brush (red not pictured). One size fits most adults. Measures 23 inches in circumference in the inside of the helmet.

Attach these vinyl spats to your sandal for a Roman look. Metal decoration and studs are accent the vinyl spats. Fit to your leg with the hooks and loops. Set of 2 spats. Available in



black or brown (brown not pictured).

Part #	Description	Price Each
#C1120	Roman Guard Costume Set	\$ 59.95
#C0713	Roman Gold Black Brush Helmet	\$ 27.95
C0819	Roman Gold Red Brush Helmet	\$ 27.95
#C0295	Roman Black Sandal Spats	\$ 16.95
#C2216	Roman Brown Sandal Spats	\$ 16.95
#C5214	Roman Black Studded Belt	\$ 17.95
#C5215	Roman Brown Studded Belt	\$ 17.95

Feather Helmets

Helmets are made of heavy duty plastic and have marabou feathers on top. **Gold** plastic helmet or **silver** helmets (**silver not shown**). Come with choice of **red, black, or white (not shown) feathers.**



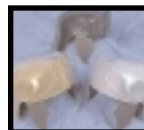
This Roman helmet is made of heavy plastic. It is one size fits all adults. The brush on this model is plastic as well. Comes in **gold or silver colors.**

Part #	Description	Price Each
#C2217	Roman Gold Helmet Red Feather	\$ 24.95
#C2218	Roman Gold Helmet Black Feather	\$ 24.95
#C2220	Roman Gold Helmet White Feather	\$ 24.95
#C2221	Roman Black Helmet Red Feather	\$ 24.95
#C2222	Roman Silver Helmet Black Feather	\$ 24.95
#C2224	Roman Silver Helmet White Feather	\$ 24.95

Part #	Description	Price Each
#C0274	Roman Plastic Gold Comb Helmet	\$ 16.95
#C0275	Roman Plastic Silver CombHelmet	\$ 16.95

The same heavy duty gold plastic as more expensive helmets shown at right, but is economical because this model does not have a brush top. Now available in **gold, black, or silver.** U.S.A.

Part #	Description	Price Each
C2225	Roman Gold Helmet No Comb	\$ 12.95
C2221	Roman Black Helmet No Comb	\$ 12.95
C2223	Roman Silver Helmet No Comb	\$ 12.95



Roman Armor



This is the largest shield being sold. It measures up to 29 1/2" X 18" in the widest parts. Can be used for Romans or other time periods. Slightly darker of a gray color than the Roman armor, but realistic-looking plastic.

Design of lions, crown, and eagle. Two straps in back of shield for arms to hold. Medium weight silver-tone & gold-tone plastic. Imported from China.

Part #	Description	Price Each
#C5224	Roman Deluxe Shield	\$ 12.95



Roman jeweled dagger comes with plastic sheath. Imported. **Not for young children.**

Part #	Description	Price Each
#C3959	Roman Jeweled Dagger & Sheath	\$ 1.75

The Roman broadsword is made in the U.S.A. The plastic blade is silver colored; the handle is gold colored plastic. The swords range in size from 19"-24." We choose the sword size depending on availability. Black and gold now available! **Not for young children.**

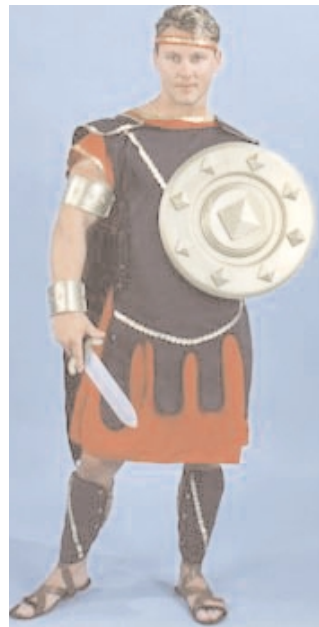


Part #	Description	Price Each
#C0273	Roman Broadsword Silver	\$ 6.95
#C2208	Roman Broadsword Black	\$ 6.95

Roman plastic daggers are about half the size of the broadsword. Silver or black with gold handle. **Not for young children.**



Part #	Description	Price Each
#C0273	Roman Dagger Silver	\$ 5.50
#C2234	Roman Dagger Black	\$ 5.50



Costume is for a Roman gladiator, but can be used for other Roman soldiers. Consists of headband, tunic, cape, and shin guards. **Not included are armbands, sword, and shield.**

Plastic accessories are sold separately.



These shields are made of heavier plastic than the others silver shields. Armllets on the back for holding the shield. They are of a better quality feel for longer use. **Gold, silver, or black.**



Armbands & wristbands are of thick plastic. Armband/wristband of lame' fabric with faux jewels available (at right). Brown vinyl



leather-look also available (shown at left).



Part #	Description	Price Each
#C5714	Roman Gladiator Costume Set	\$ 74.95
#C0714	Roman Heavy Golden Shield	\$ 12.95
#C2210	Roman Heavy Black Shield	\$ 12.95
#C2218	Roman Heavy Silver Shield	\$ 12.95
#C2237	Roman Armband	\$ 3.95
#C2239	Roman Wristband	\$ 3.50
#C1278	Roman Armband/Wristband Lame	\$ 8.95
#C3958	Roman Brown Vinyl Wristbands	\$ 8.50



Adult chest armor has a front and back made of **lightweight economical plastic**. Silver colored with golden decoration. Use string to tie the armor on. These leg guards below cover the front of each lower leg. They fit adults. Use string to tie them to your legs.

This costume above is made from a red Roman tunic, cape, and lightweight silver-colored armor. Tunic made in the U.S.A.



The shield is 22 1/2 X 16 1/2 inches.



Accessories can be purchased separately.

Now, deluxe quality of leg armor available. Heavier plastic.

Part #	Description	Price Each
#C0341	Set of Roman Leg Armor	\$ 4.95
#C0340	Roman Chest Armor	\$ 10.95
#C0915	Roman Oval Silver Shield	\$ 6.50
#C0919	Red Roman Undertunic (no cloak)	\$15.75
#C5559	White Roman Undertunic (no cloak)	\$ 15.75
#C0272	Plastic Roman Economy Helmet	\$ 4.50
#C0955	Roman Burgundy Tunic & Cape Set	\$ 29.95
#C0955	Roman Red Cape	\$ 14.95
#C0467	Roman Rental Quality Leg Armor Set	\$ 19.95

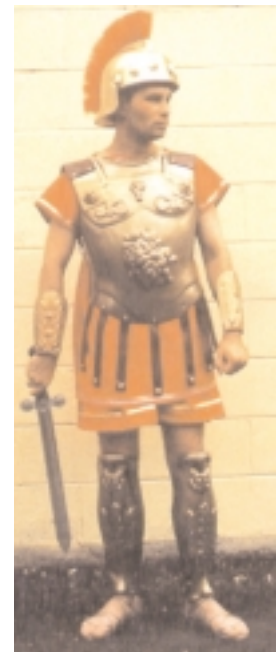


This Roman shield is silver and gold plastic. The center of the shield has a lion.

Part #	Description	Price Each
#C0339	Roman Shield	\$ 9.95

The gold-colored armor is made of quality, heavy duty plastic. The breastplate, leg guards, and arm guards make up this costume. Heavier plastic than the other armor. **Helmet, tunic, and sword not included.**

Helmet sold separately and **high quality and thick**. Red bristles.



Part #	Description	Price Each
#C0711	Gold-Colored Heavy Roman Armor	\$ 79.95
#C0898	Red Bristle Heavy Duty Gold Helmet	\$ 69.95

Angel Costumes & Accessories



Lace angel costume is quite pretty. Made in the U.S.A. of lace fabric and gold trim.



Angel wings and halo made of feathers sold separately.

Part #	Description	Price Each
#C0923	Lace Angel Dress Adult Size	\$ 94.95
#C0972	Angel Feather Wings 15 inches	\$ 16.95
#C0974	Angel Feather Wings 21 inches	\$ 34.95
#C0975	Feather Angel Halo size 6	\$ 3.75
#C0976	Feather Angel Halo size 8	\$ 3.75



The angel dress is made in the U.S.A. The costume has flowing sleeves with metallic trim. **Wings and halo not included.**



Part #	Description	Price Each
#C0902	Angel Dress Adult	\$ 47.95
#C0976	Angel Dress Child Size 4-6	\$ 39.95
#C0977	Angel Dress Child Size 8-10	\$ 39.95



The angel wings are made from netted fabric and decorated with glitter. The halo is made from tinsel and is on a headband. The children set is only available in silver color. The adult wings are silver or gold. The halo is only in silver.

Part #	Description	Price Each
#C0388	Angel Wings & Halo Set Child silver	\$ 6.25
#C0389	Angel Halo silver	\$ 2.25
#C0387	Angel Wings & Halo set Adult silver	\$ 6.50
#C0387	Angel Wings Adult gold	\$ 6.25

The feather wings are handmade from marabou feathers and are tied in place. The wings measure a large 35" wide. One size fits most adults.



Dress sold separately.

Part #	Description	Price Each
#C0343	Adult Feather Angel Wings	\$ 79.95

Lame' Angel Wings

Gold or silver lame' fabric wings are available. Shimmers. Shown at right.



White plastic angel wings are available **(not pictured)**.

Part #	Description	Price Each
#C0920	Silver Lame' Angel Wings	\$ 24.95
#C0922	Gold Lame' Angel Wings	\$24.95
#C0923	White Plastic Angel Wings	\$ 5.95

Mary / Biblical Woman Costume



This costume is ideal for Mary or any other Biblical woman. The white gown reaches to the floor. The head covering is pastel blue or teal/blue. Polyester. One size fits all. U.S.A. of domestic or imported fabric.

Part #	Description	Price Each
#C0298	Biblical Woman/Mary Adult	\$ 39.95

Women Costumes



On left is biblical townswoman costume. Comes with light-colored headpiece and dress with dark bluish overcoat and sash belt. Polyester and/or cotton. U.S.A. of domestic or imported fabric.

Part #	Description	Price Each
#C0907	Biblical Townswoman	\$ 59.95

Mary Magdalene Costume



At left is Mary Magdalene costume or similar Biblical character. Includes robe, drape, an belt. Bright salmon color & yellow. Made in U.S.A. of domestic or imported fabric.

Part #	Description	Price Each
#C6076	Mary Magdalene Costume	\$ 59.95

Biblical Peasant Women



To the left are shown biblical peasant woman costumes. Colorful dress in cotton fabric comes with white polyester headpiece. Comes in dress colors such as: . Corded white belt. U.S.A. of domestic or imported fabric.

Part #	Description	Price Each
#C4924	Biblical Peasant Woman Moss Green	\$ 49.95
#C4925	Biblical Peasant Woman Yellow	\$ 49.95
#C4925	Biblical Peasant Woman Rose	\$ 49.95
#C4925	Biblical Peasant Woman Pink	\$ 49.95

Tambourine

Tambourine is 9 inches in diameter. It is constructed from high quality plastic. Great musical accessory for biblical women.



Part #	Description	Price Each
#C0337	Plastic Tambourine	\$7.95
#C0338	Plastic Tambourine economy	\$ 5.50

Kings/Wisemen



Child size king/wiseman costume. Robe made in U.S.A. includes a drape. Lame' collar. **Crown sold separately. Bottle not included.** Small, medium, and large sizes.



King on the left has a coat over a robe.

King on the right has a one piece robe with lame gold accents and turban.

Crown sold separately.

Part #	Description	Price Each
#C4490	King with coat	\$ 79.95
#C4491	Wiseman with turban	\$ 69.95

Part #	Description	Price Each
#C4324	Child Wiseman Costume 4-6	\$ 44.95
#C4325	Child Wiseman Costume 8-10	\$ 44.95
#C4324	Child Wiseman Costume 12-14	\$ 44.95
#C4325	Child Golden Jeweled Crown	\$ 5.50



Elegant costume was designed to be used for a King Herod, but can be substituted for other kings. Comes with robe and overcoat. Faux jewels elaborate this ornate-costume. U.S.A.

Part #	Description	Price Each
#C4498	King Herod Costume	\$ 159.95



Costume at the left includes long cape, robe with cord belt, and medallion. Colors vary, but elegant, royal colors. Long cape is penne' velvet. U.S.A. Crown not included.

King with cape costume is one color with robe with gold trim and headcovering with robe tie. Is a mock overcoat;

costume looks like 2-piece gown but is really one. Can be used for a king or rich biblical person. Colors vary greatly. **(not pictured).**

Part #	Description	Price Each
#C4494	King with cape	\$ 124.95
#C4495	Wiseman / Sheik	\$ 59.95
#C0318	Golden Jeweled Crown Adult	\$ 6.95



King's cape is thick and soft. Furry-feel. Trim is white. Cape is red, blue, or purple. Purple was often the color of royalty. U.S.A.

Crown and sceptor sold separately on next page of catalog.

Part #	Description	Price Each
#C4 528	King's Cape Red	\$ 67.95
#C4529	King's Cape Purple	\$ 67.95
#C4530	King's Cape Blue	\$ 67.95



Trojan Warrior

This is depicting a Greek soldier, but some costume parts may be used as substitutes for Roman costume items (as high quality tunic/cape). Includes tunic, cape, and brown vinyl check armor/belt. **Helmet, sword, & shield sold separately.** Tunic U.S.A.

Part #	Description	Price Each
#C5210	Trojan Warrior Costume	\$ 94.95
#C5128	High Quality Red Tunic	\$ 29.95
#C5130	High Quality Red Cape	\$ 34.95
#C5131	Trojan Vinyl Armor	\$ 34.95



Same as jeweled crown on left of this page, except this one is lined for an elaborate look. Imported.

Part #	Description	Price Each
#C4504	Golden Jeweled Lined Crown Red	\$ 13.95
#C4506	Golden Jeweled Lined Crown Purple	\$ 13.95



Lame' king's collar for king, wiseman, or Egyptian costumes. Faux gems. Gold color. U.S.A.

Part #	Description	Price Each
#C4499	Lame King's Collar	\$ 14.95



Faux kings jewelry ideal for any biblical king or 3 wiseman costumes. Assorted.

Part #	Description	Price Each
#C4497	King's medallion necklace	\$ 12.95

King's Accessories



Plastic crown has faux gemstones. Great for the 3 Kings or other Biblical king or queen. Child or adult sizes.

Part #	Description	Price Each
#C0318	Golden Jeweled Crown Adult	\$ 6.95
#C4325	King Jeweled Crown Child	\$ 5.50



These **scepters** can be used for the **3 Kings** in a live nativity or pageant or for any other Biblical king. The 16" scepter on the left is a high quality golden model studded with faux gems. The economical one on the right is 15" and made with sequins.

Part #	Description	Price Each
#C0320	Scepter W/ Gems	\$ 34.95
#C0321	Sequin Scepter Silver Color	\$ 4.50
#C4510	Sequin Scepter Gold Color	\$ 4.50

See the web site for even more historical costumes!



Shoulder-length headpiece (left) is strung with beads. It is golden in color. The black wig is ideal for an



Egyptian woman. The wig has straight, shoulder length hair and bangs. **Snake necklace sold separately.**

Part #	Description	Price Each
#C0319	Egyptian Headpiece	\$19.95
#C0331	Egyptian Woman Wig	\$24.95



Gold colored accessories are Egyptian snakes with eyes in assorted colors. The snake belt is 40" and adjustable. The necklace is 20 inches, and the bracelet is 16" and adjustable. Metal.

Part #	Description	Price Each
#C0315	Egyptian Snake Belt	\$8.95
#C0316	Egyptian Snake Necklace	\$6.75
#C0317	Egyptian Snake Bracelet	\$5.50



Props to represent the Egyptian plagues and Moses, or for other



performances. **Not for children 3 and under.**



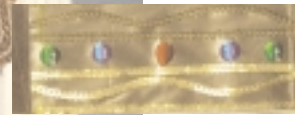
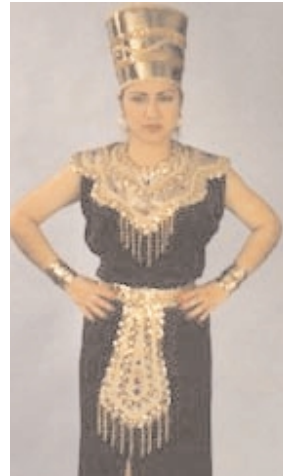
Part #	Description	Price Each
#C0341	72" Snake	\$7.50
#C0342	22" Snake	\$1.50
#C0343	Rubber Frog Prop	\$3.95



armbands

Costume comes with lame headpiece, wrist bands and velvet collar both with faux gems, and decorated skirt. The color of the skirt varies. One size fits all. Although the costume comes with these accessories shown, the various pieces may be purchased separately.

Part #	Description	Price Each
#C0308	Egyptian Man Costume Set	\$ 69.95
#C0309	Pharaoh Headpiece	\$ 17.95
#C0310	Egyptian Armband & Wristband	\$ 7.50
#C0937	Egyptian Male Jeweled Belt	\$ 19.95
#C0934	Egyptian Male Jeweled Collar	\$ 19.95
#C2224	Pharaoh Skirt (various colors)	\$ 13.95



The above are Egyptian women costumes as shown. The accessories are also sold separately.

Part #	Description	Price Each
#C1107	Egyptian Woman Adult Black	\$ 92.95
#C1109	Egyptian Woman Adult White	\$ 64.95
#C1110	Egyptian Collar Female (on right)	\$ 16.95
#C1112	Egyptian Belt Female (on right)	\$ 16.95
#C1113	Egyptian Female Hat (on left)	\$ 14.95
#C1114	Egyptian Female Wristbands (on left)	\$ 9.95



Lame' king's collar for king, wiseman, or Egyptian costumes. Faux gems. Gold color. U.S.A.

Part #	Description	Price Each
#C4499	Lame' King's Collar	\$ 14.95



Bright red Christmas skirt with trim and ruffle. Misses or plus women sizes. U.S.A. **Apron not included.**

Matching mop hat sold separately in bright red color (similar to hat in caroler # C4626).

Part #	Description	Price Each
#C5712	Christmas Bright Red Skirt	\$ 39.95
#C5714	Christmas Bright Red Skirt Plus Size	\$39.95
#C5716	Christmas Bright Red Mop Hat	\$ 7.95

For Choir or Caroling

Christmas Carolers

Dicken's style Christmas caroling outfit includes capelet, blouse, skirt, and belt.

Outfit made of penne' velvet and marabou white feather trim. Comes in black, blue, burgundy, or green. Sizes adult misses S (4-6), M (8-10), or L. U.S.A. **Fur muff & hat sold separately.**



Accessories can be purchased separately. Marabou and penne' velvet. Black hat to match all dresses.

Part #	Description	Price Each
#C5690	Dickens Capelet Burgundy	\$ 19.50
#C5691	Dickens Capelet Black	\$ 19.50
#C5692	Dickens Capelet Blue	\$ 19.50
#C5693	Dickens Capelet Green	\$ 19.50
#C5810	Dickens Hat Black	\$ 12.95
#C5811	Dickens Fur Muff for hands white	\$ 9.95

Part #	Description	Price Each
#C5680	Caroler Costume Small Burgundy	\$ 99.95
#C5681	Caroler Costume Small Black	\$ 99.95
#C5682	Caroler Costume Small Blue	OUT-OF-STOCK
#C5683	Caroler Costume Small Green	\$ 99.95
#C5684	Caroler Costume Medium Burgundy	\$ 99.95
#C5685	Caroler Costume Medium Black	\$ 99.95
#C5686	Caroler Costume Medium Blue	\$ 99.95
#C5687	Caroler Costume Medium Green	\$ 99.95
#C5688	Caroler Costume Large Burgundy	\$ 99.95
#C5689	Caroler Costume Large Black	\$ 99.95
#C5695	Caroler Costume Large Blue	\$ 99.95
#C5696	Caroler Costume Large Green	\$ 99.95



Dickens style outfit comes in green or burgundy. Comes with capelet lined in marabou, mop hat, skirt, and belt. **Blouse and caroling book not included.**

Size specifications (8-10): Misses outfit is a size 8 stretches to a size 10. Skirt waist measures approx. 26" but stretches up to 32 inches. Length of skirt is approx. 40 inches. Shirt is wide to accommodate varies bust sizes; skirt is meant to be tucked in under the belt. Shirt sleeve is approx. 26 inches in length. Capelet hangs about 19" long down back. **Size specifications Large:** Misses outfit is a size 12 stretches to a size 14. Skirt waist measures approx. 26" but stretches up to 36 inches. Length of skirt is approx. 40 inches. Shirt is wide to accommodate varies bust sizes; skirt is meant to be tucked in under the belt. Shirt sleeve is approx. 27 inches in length. Capelet hangs about 20 1/2" long down back.

Part #	Description	Price Each
#C4626	Dickens Caroler With Mop Hat Green	\$ 89.95
#C4627	Dickens Caroler With Mop Hat Burgundy	\$ 89.95



Apparel For Choir, Caroling

Exclusive Green/Red plaid skirt is green, red with yellow, burgundy, & blue small accent color lines. Faintly painted with some metallic golden lines on the fabric. U.S.A. of imported or domestic fabric. Belt included with green skirt. One size fits all regular misses. Same design as picture on right, but Michele's exclusive variation of the skirt is made of quality plaid fabric at right of 70% polyester / 30% cotton blend.

Part #	Description	Price Each
#C5719	Green Plaid Christmas Skirt	\$ 43.50